



# Cambridge International AS & A Level

---

## GEOGRAPHY

9696/12

Paper 1 Core Physical Geography

October/November 2024

INSERT

1 hour 30 minutes

---

### INFORMATION

- This insert contains all the resources referred to in the questions.
- You may annotate this insert and use the blank spaces for planning. **Do not write your answers** on the insert.



---

This document has 4 pages.

Fig. 1.1 for Question 1

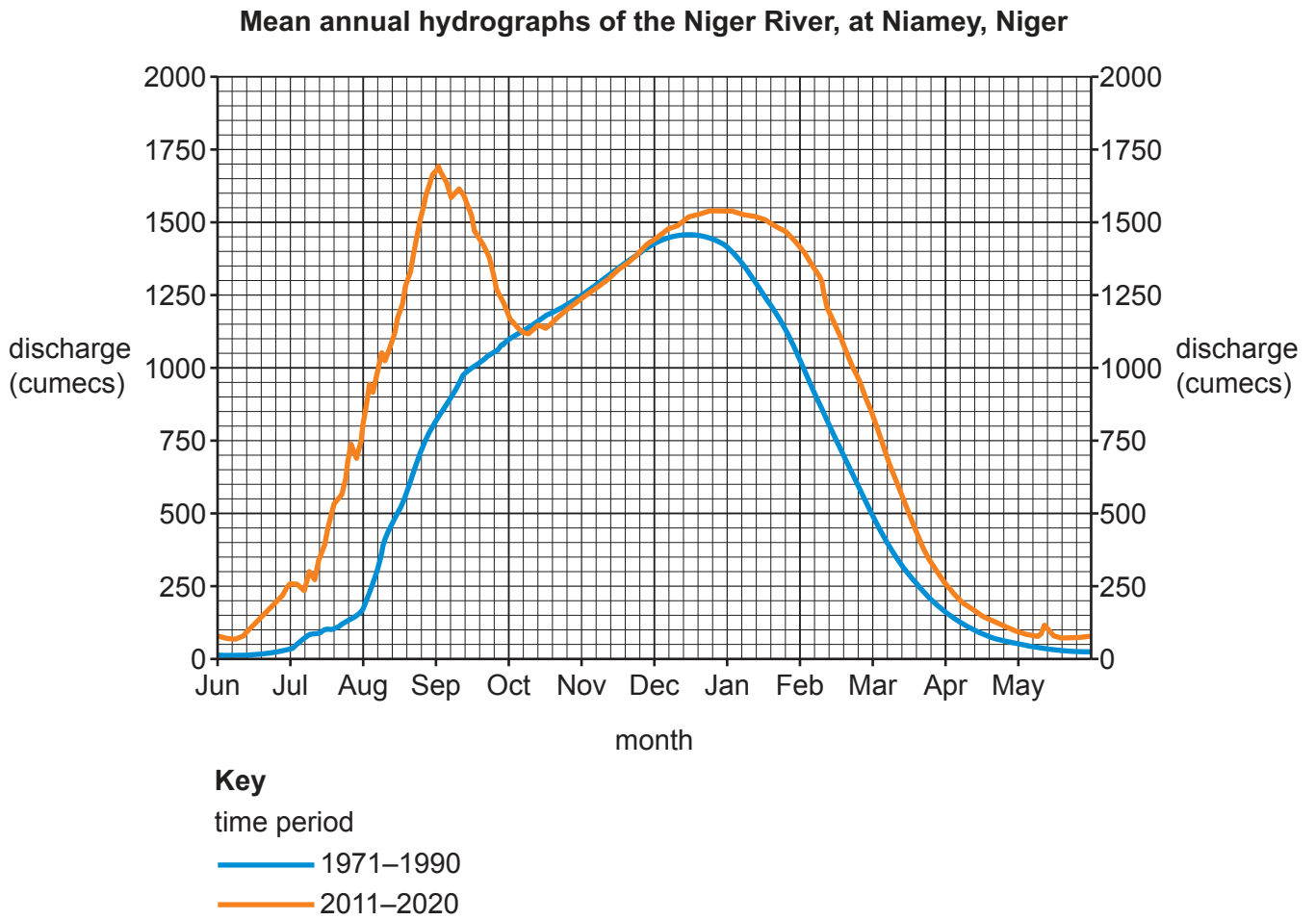
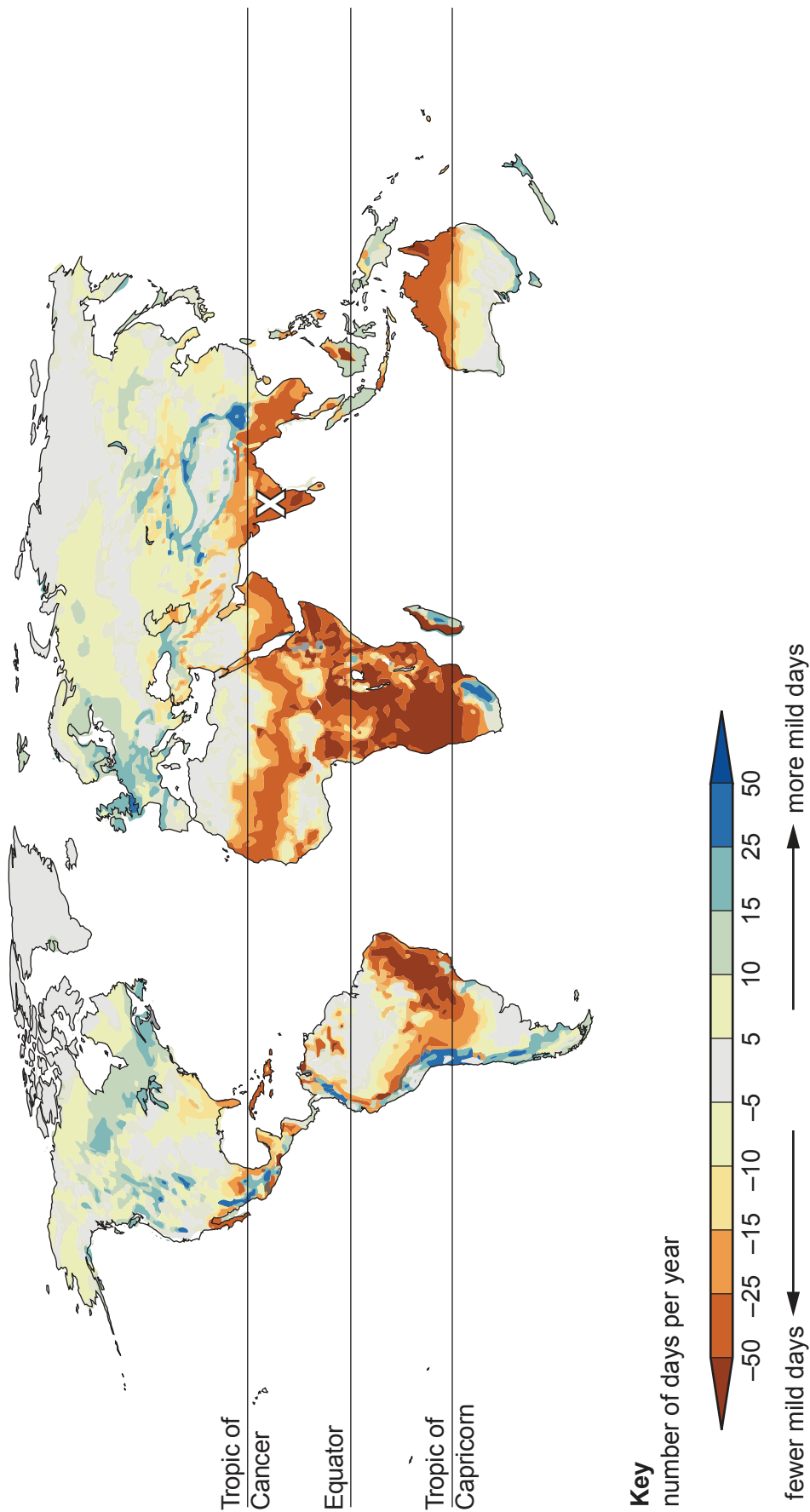


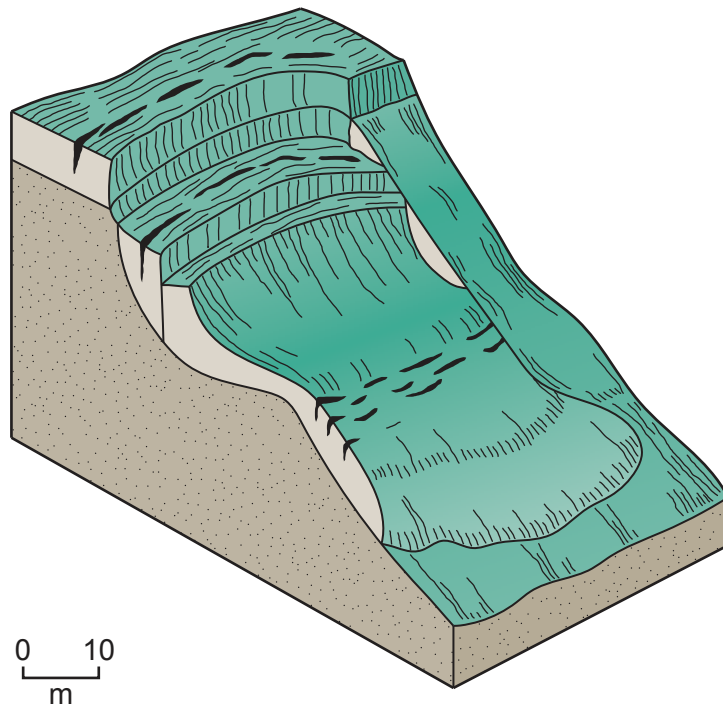
Fig. 2.1 for Question 2

Predicted change in annual number of mild days\* from the 1986–2005 average to the average predicted for the period 2081–2100



\* Mild day is defined as: daily maximum air temperature between 18 °C and 30 °C, daily total precipitation not exceeding 1 mm, and daily mean dewpoint temperature not exceeding 20 °C.

Fig. 3.1 for Question 3

**A model of a mass movement**

The boundaries and names shown, the designations used and the presentation of material on any maps contained in this question paper/insert do not imply official endorsement or acceptance by Cambridge Assessment International Education concerning the legal status of any country, territory, or area or any of its authorities, or of the delimitation of its frontiers or boundaries.

Permission to reproduce items where third-party owned material protected by copyright is included has been sought and cleared where possible. Every reasonable effort has been made by the publisher (UCLES) to trace copyright holders, but if any items requiring clearance have unwittingly been included, the publisher will be pleased to make amends at the earliest possible opportunity.

To avoid the issue of disclosure of answer-related information to candidates, all copyright acknowledgements are reproduced online in the Cambridge Assessment International Education Copyright Acknowledgements Booklet. This is produced for each series of examinations and is freely available to download at [www.cambridgeinternational.org](http://www.cambridgeinternational.org) after the live examination series.

Cambridge Assessment International Education is part of Cambridge Assessment. Cambridge Assessment is the brand name of the University of Cambridge Local Examinations Syndicate (UCLES), which is a department of the University of Cambridge.